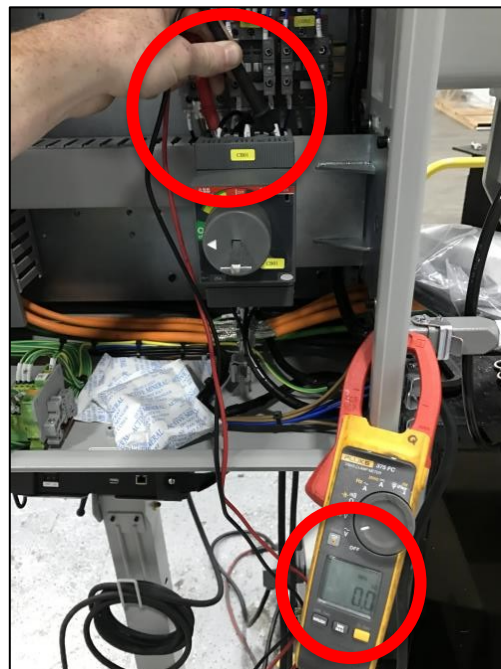


Replacing Your Line Filter

- 1) Power **OFF** and lockout/tagout your robot at its main power disconnect.

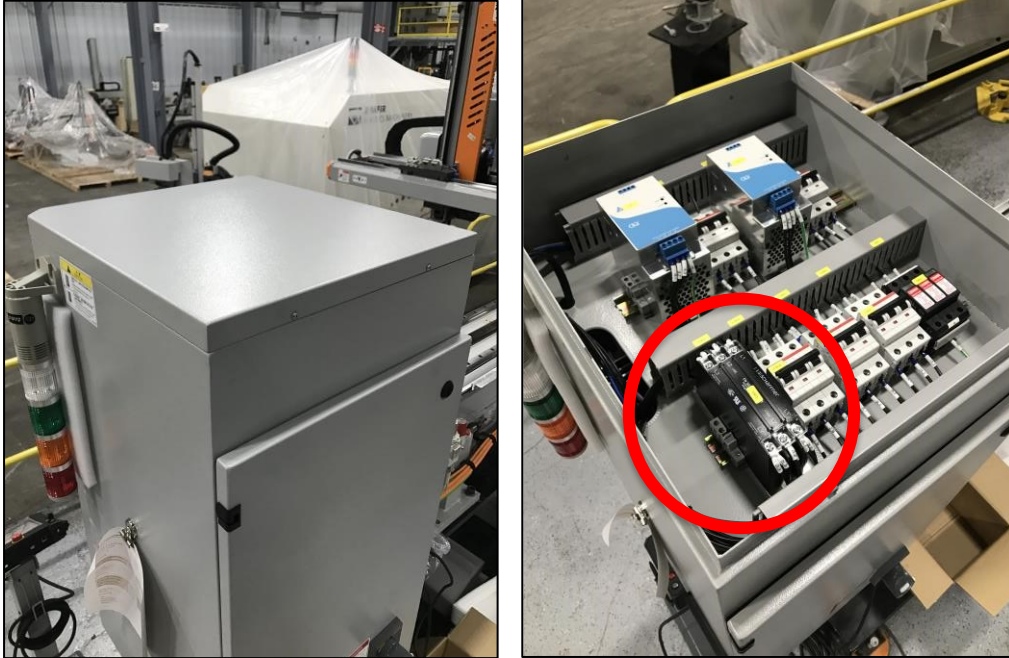


- 2) Check the line voltage at the robots disconnect to ensure there is no power going through the robot.



Replacing Your Line Filter

- 3) Remove the top cover of the robot cabinet and locate the robots line filter.



Alternate Location: Inside the high voltage side of the robot cabinet behind the disconnect.



Replacing Your Line Filter

- 4) Check the voltage between L1, L2 and L3 going into your line filter to ensure there is no voltage.



- 5) Before removing any wires, please take a picture of the current wiring and their tags to ensure the wires are terminated properly on your new line filter.
- 6) Using a Philips head screwdriver, remove the wires on both sides of the line filter, including the ground wire located on the bottom of the **LOAD** side.



Replacing Your Line Filter

- 7) Now remove the old line filter and replace it with the new line filter in the same orientation (THE ORIENTATION OF YOUR LINE FILTER MATTERS)



- 8) Ensure that the wires are terminated in the **EXACT** same terminals as your old line filter. (Wires 1L1 go to L1, wires 1L2 go to L2, wires 1L3 go to L3. Wires 2L1 go to L1', wires 2L2 go to L2', wires 2L3 go to L3').



- 9) **BE SURE TO CONNECT THE GROUND WIRE AT THE BOTTOM OF THE LOAD SIDE OF THE LINE FILTER**



- 10) Make sure that each connection is tight. Pull on each wire individually to ensure a good connection.
- 11) Once all connections are made and checked for tightness, please put the top cover of the robot cabinet back on. You are now ready to power your robot back on.
- 12) For additional assistance or questions, please contact ARI Service.