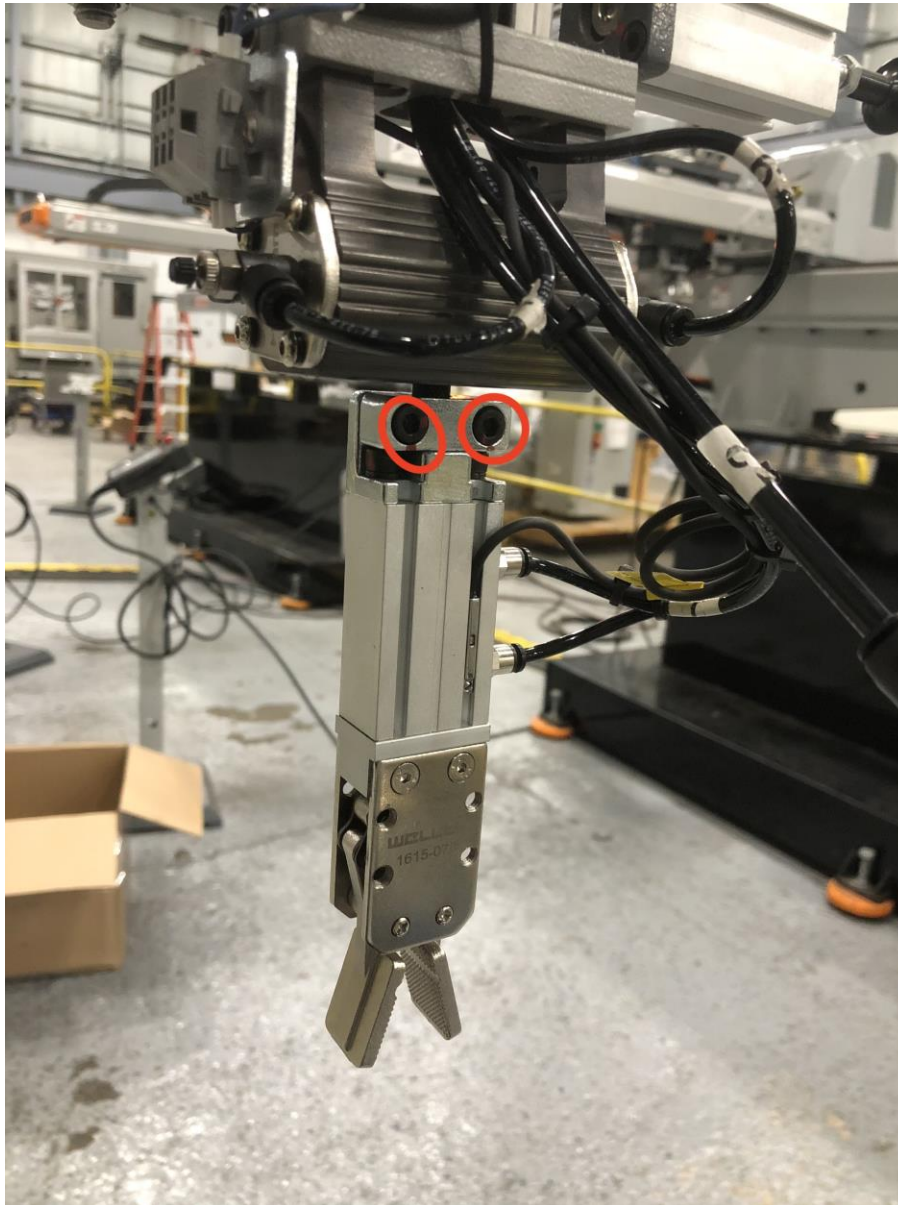


# Reverse Picker Direction

**Note:** The following procedure will explain how to reverse the direction of your XW series Picker. This will reverse the orientation the part is dropped by 180 degrees. A user may want to do this to their picker if they are trying to change the orientation the part is dropped on a conveyor.

1. Begin by powering off the picker and loosening the two bolts shown below



2. Next, rotate the wrist 90 degrees on its shaft in desired direction. If the wrist currently rotates clockwise turn it 90 degrees counterclockwise and vice versa.
3. Re-tighten the two bolts that were loosened in the first step.

# Reverse Picker Direction

4. Swap the positions of the two pneumatic hoses shown in picture two.



5. Test the picker's operation.