

# Change a Signal Name

## Summary:

The following procedure allows the user to change any input or output signal name to a name of their choice. The following procedure modifies the label of the input or output in all settings.

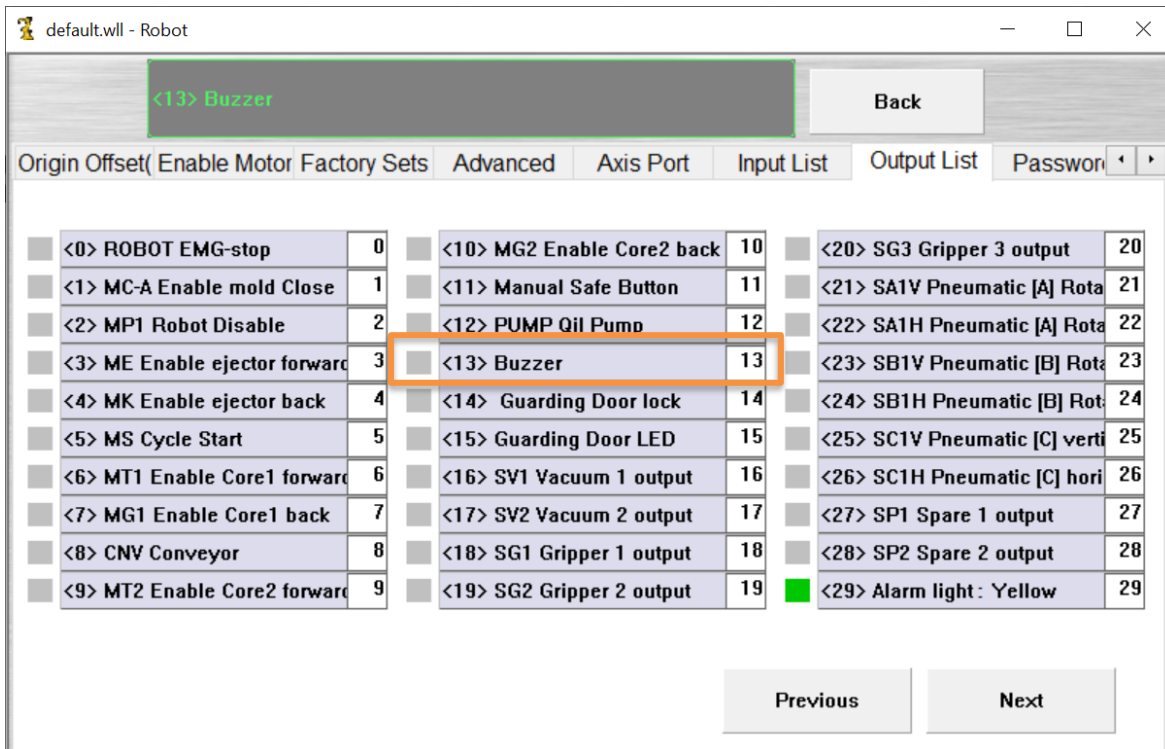
**Note:** Please note this only works on 3.38STO200505 and higher. This software is compatible with all ARI robots with absolute encoders and STO options. These robots started shipping in 2019 with floor-mounted cabinets for reference.

## Instructions:

1. Navigate to the signals page:
  1. Function >Function Set > Advanced >Inputs/Outputs

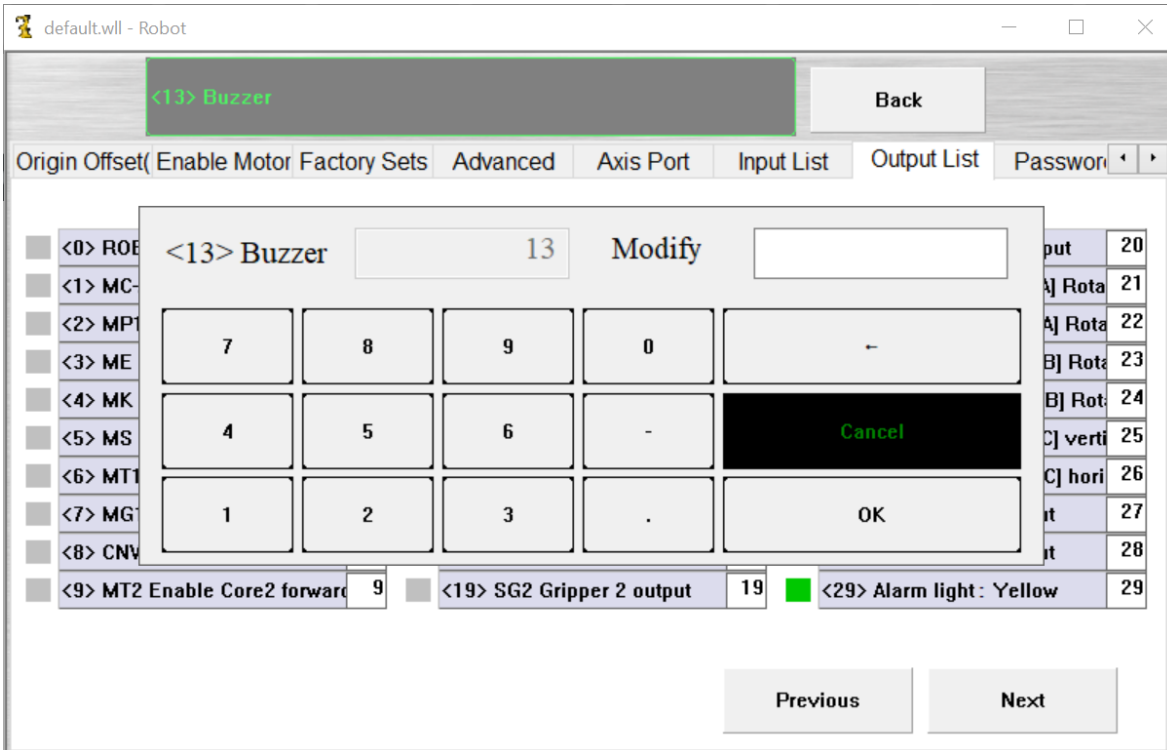


2. Select the signal name you wish to change

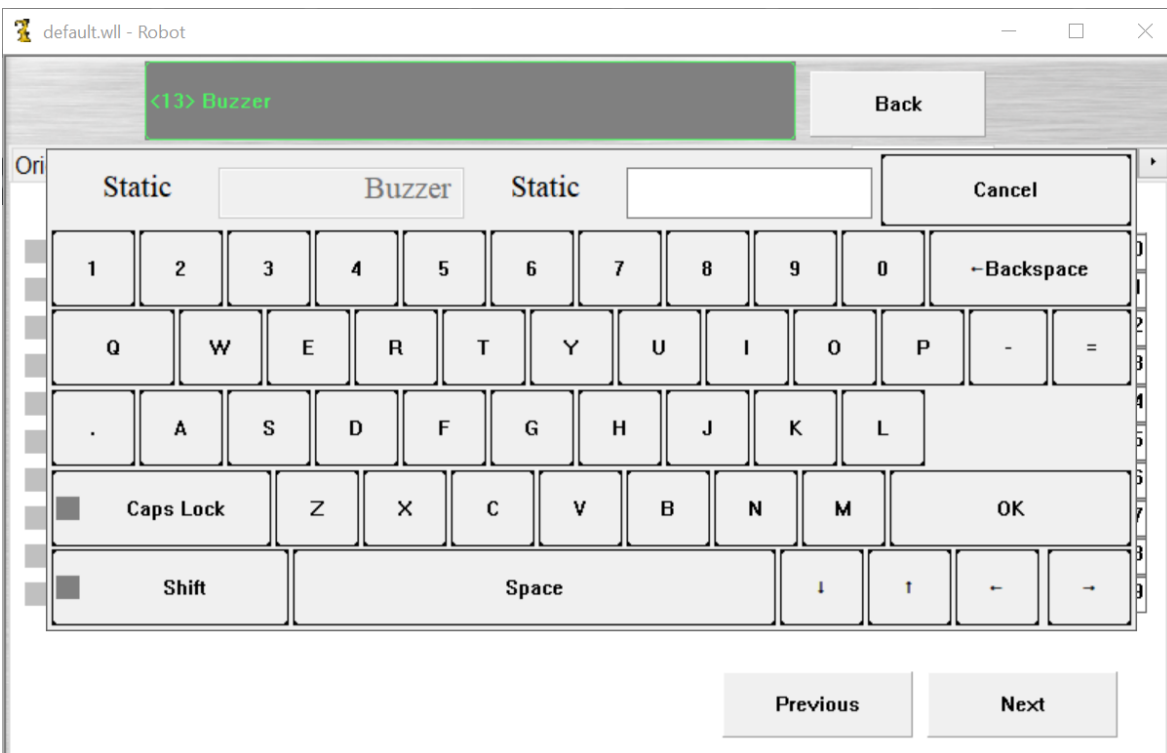


# Change a Signal Name

3. Press Cancel

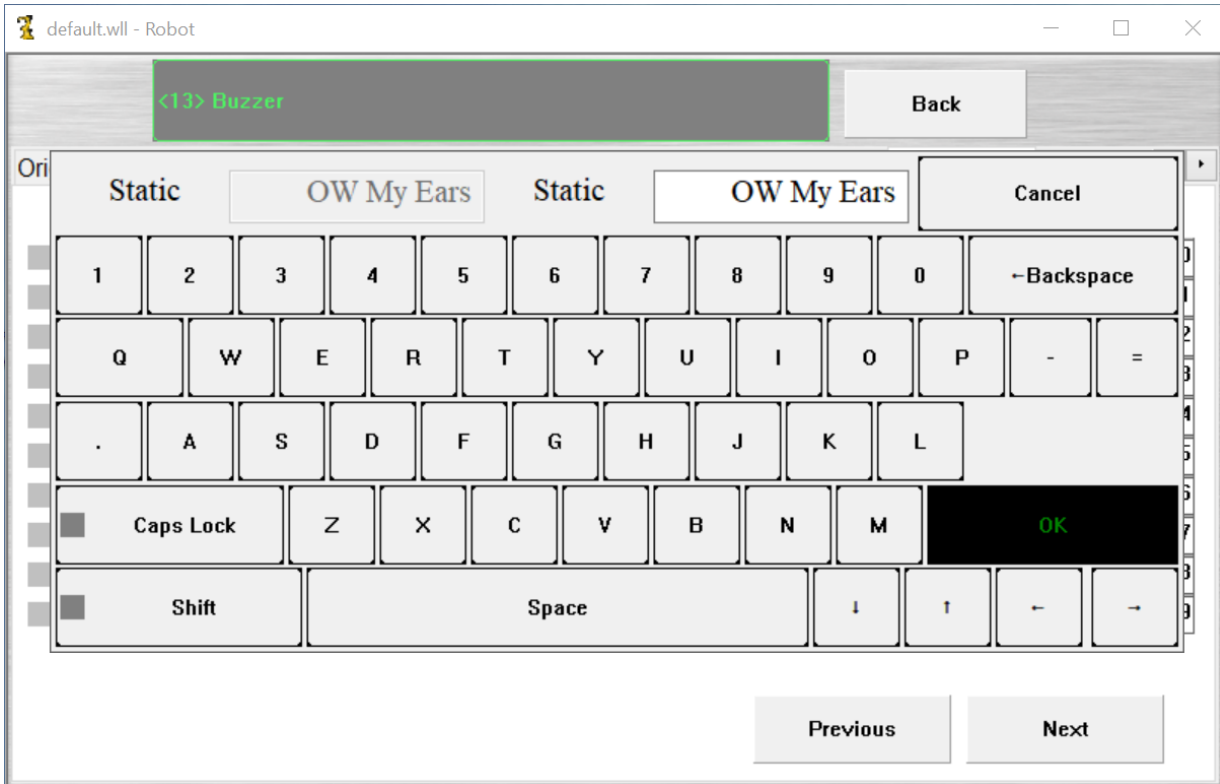


4. Click on the box in the top section of the screen where the name is displayed

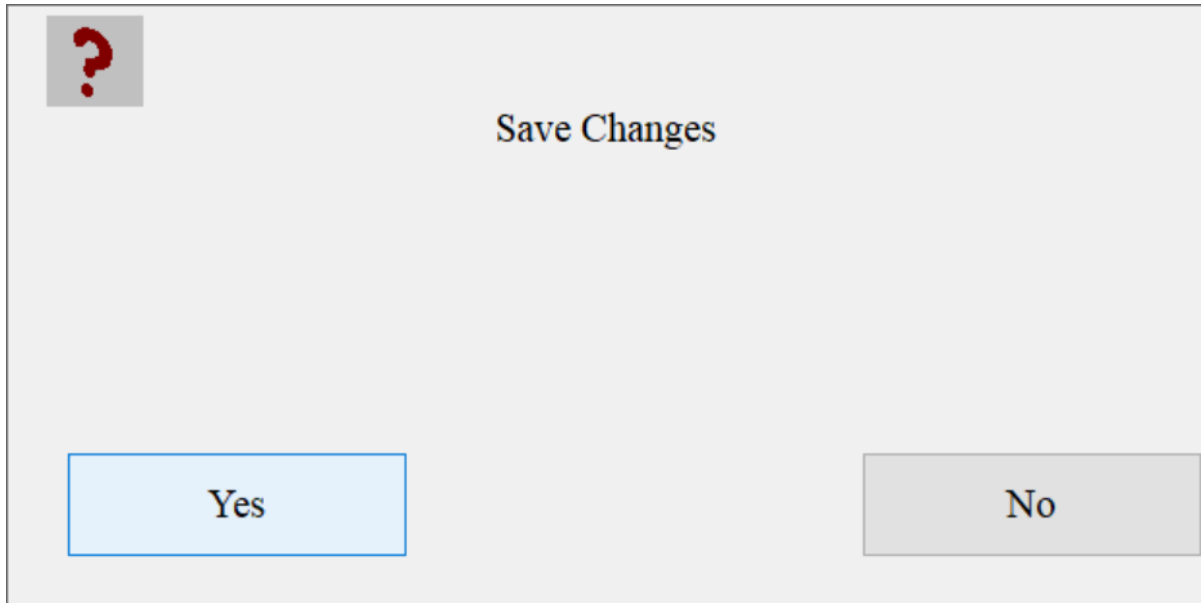


# Change a Signal Name

- 5. Type in the new name.
- 6. Press OK

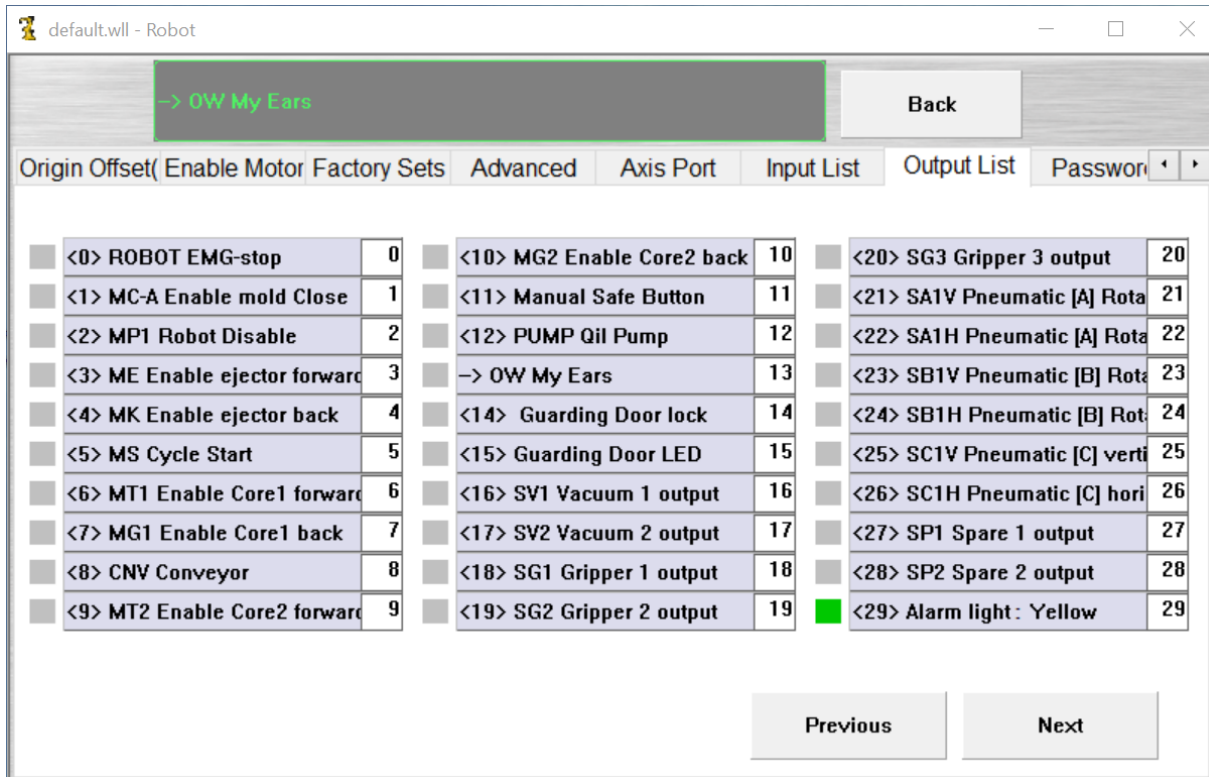


- 7. Press Yes to Save



# Change a Signal Name

## 8. Complete



## 9. The new name now appears in all menus.

